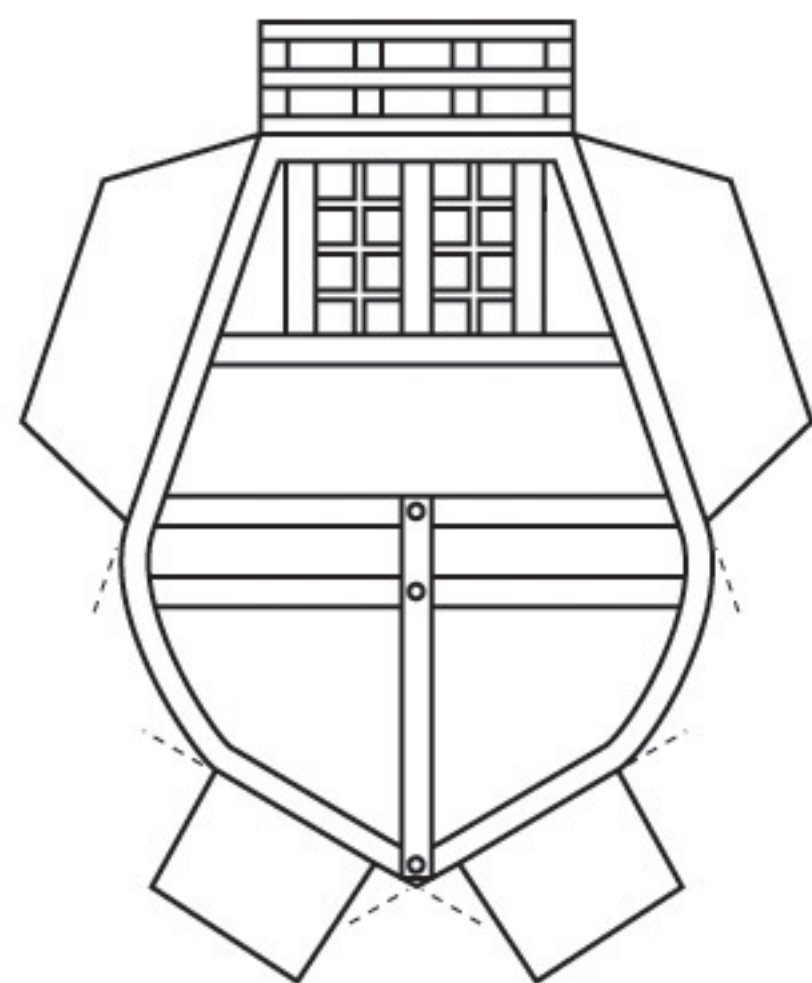
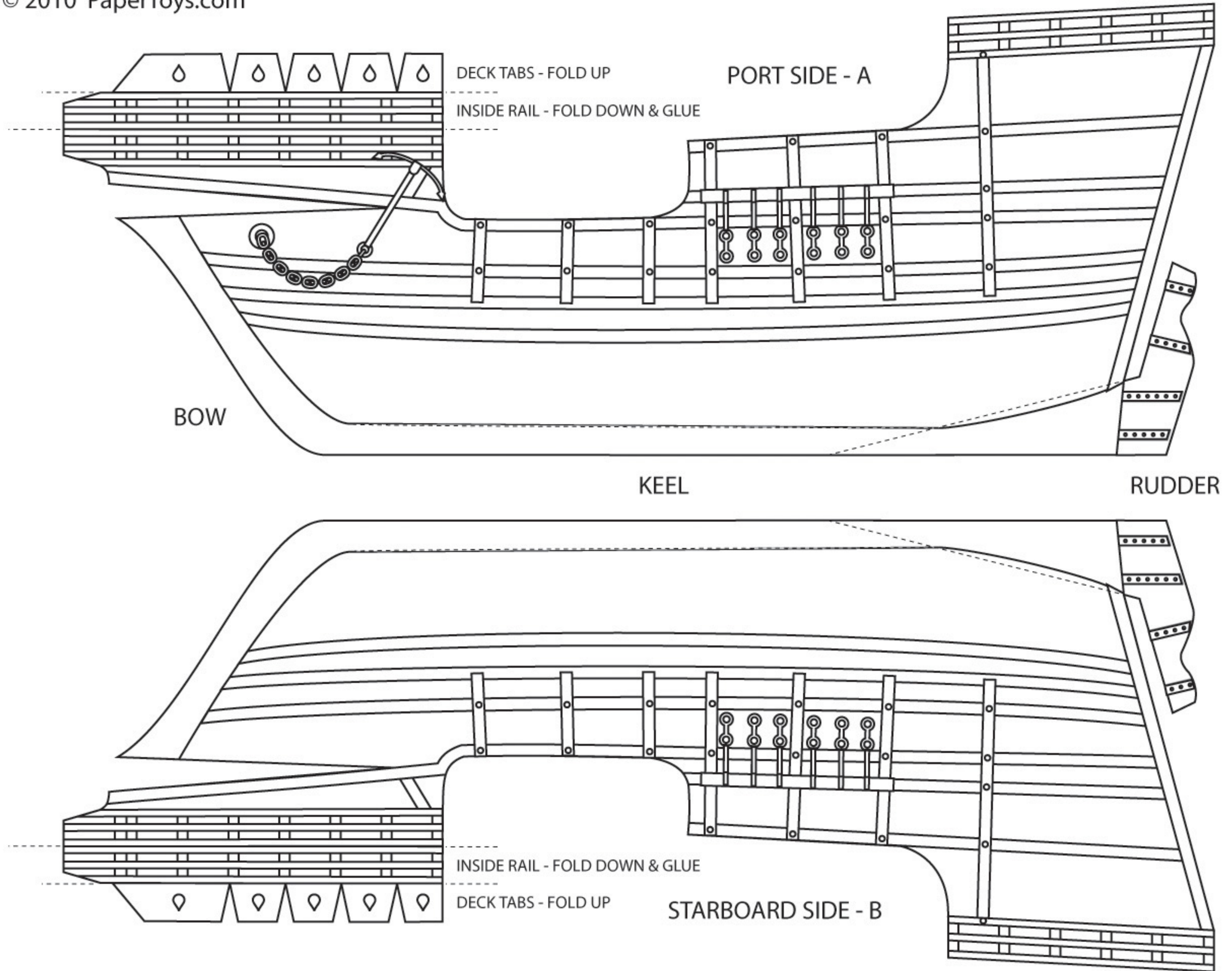


Christopher Columbus' *Santa Maria* - 1492



© 2010 PaperToys.com



STERN TABS - FOLD DOWN
STERN - C

INSTRUCTIONS - A

CUT ALL PIECES OUT. I RECOMMEND SCORING ALL THE FOLDS, ON THE BACK, WITH A BALL POINT PEN.

1. Fold DECK D, and glue the AFT RAIL back-to-back
2. On PORT SIDE A and STARBOARD SIDE B, fold the inside rails down and glue back-to-back to the outside rails, and fold the tabs up
3. On the STARBOARD SIDE B, and starting with the FORWARD DECK D, glue the deck to the tabs, followed by the DECK SIDES. Repeat with the PORT SIDE A
4. On the STERN C, fold the tabs in, and glue to the inside of the ship SIDES A B and DECK D
5. Glue the BOW, KEEL, and RUDDER together- back-to-back